

Oracle BI and Fusion Analytics

The Inside Scoop on Planning and Executing an Implementation



Presented by Gustavo González, IT Convergence Global IT Director
gfgonzalez@itconvergence.com – @ggonza4itc

Agenda

- **Company Overview**
- **Business Issues**
- **Tools evaluation**
- **What Oracle solution, why selected?**
- **Deployment Details**
- **Benefits achieved**
- **Lessons Learned**
- **Future Plans**



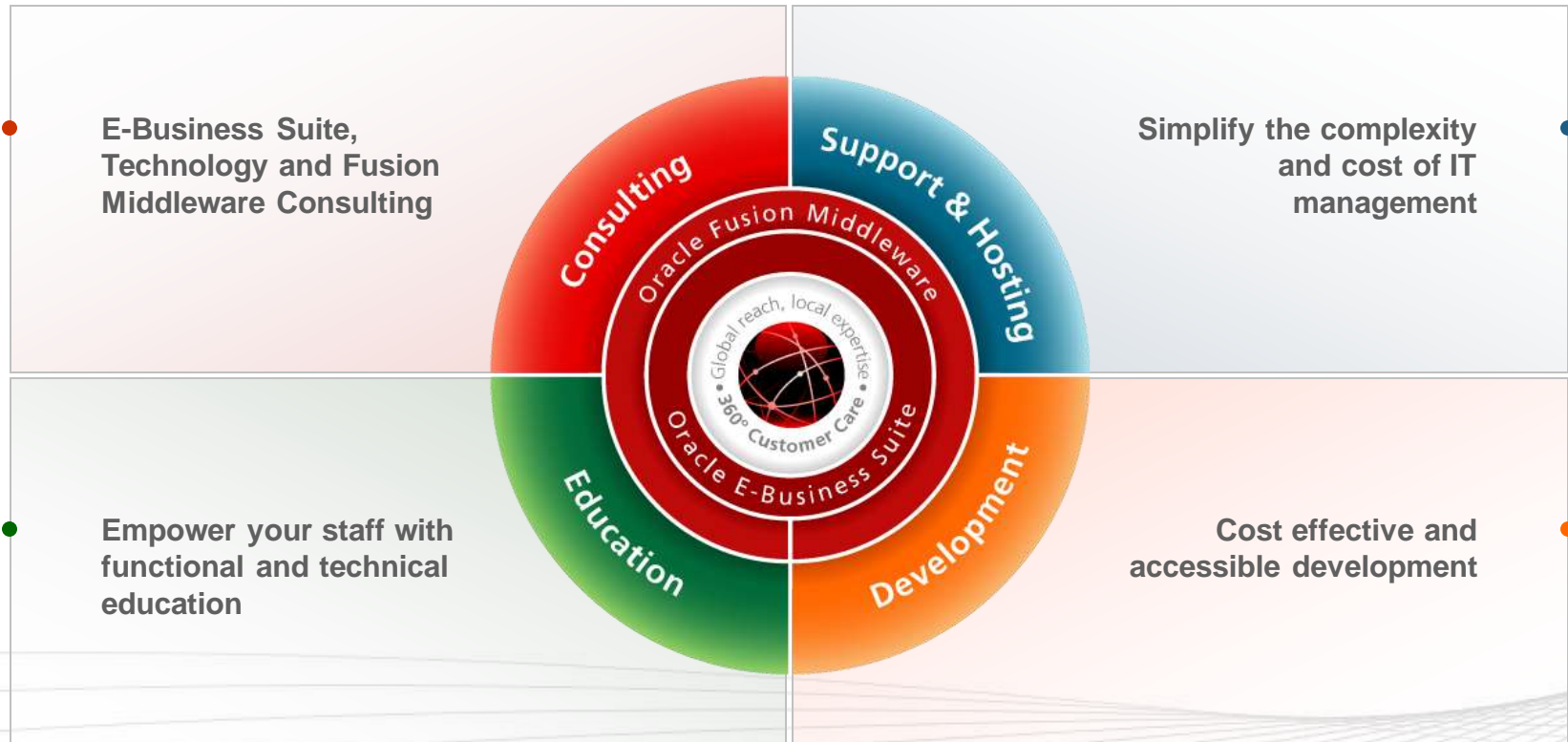
Our Mission

Create value by improving business processes through better use of technology.

600+ Customers, Engagements in Over 50 Countries



A True Full-Service Option



English Proverb

“Beauty lies in Simplicity”

Business Issues

➤ Lack of visibility:

- Individual reporting tools failed to give global visibility by company and by business area

➤ Not a single source of reporting:

- Usually, multiple reports were built on the same subjects with different parameters or grouping, causing lot of confusion

➤ Efficiency:

- Reports ran on sporadic schedule; most took a long time to display information

➤ Security:

- Maintaining security on a report-by-report basis was untenable

IT Challenges – Deliver information

- Live information: Discoverer, Noetix Web Query
- Dashboards: Discoverer, Noetix Dashboards, Oracle Portal + Noetix, Links to reports
- Refreshable excel files: using Noetix
- Personal Web Pages



Personal Web Pages

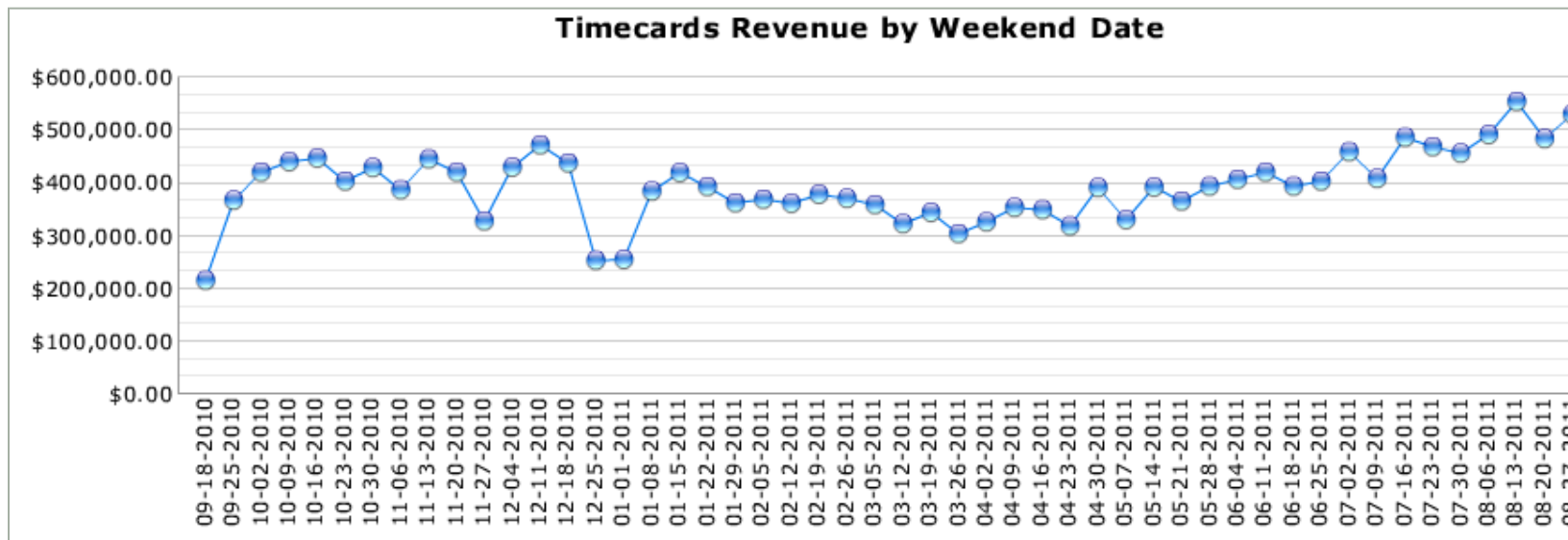
The screenshot shows a Firefox browser window with three tabs: 'Patrick Krause Home Page', 'Executive Meeting', and 'Executive Meeting Page.2'. The address bar shows the URL: http://www.itconvergence.com/portal/page?_pageid=554,793837&_dad=portal&_schema=PORTAL. The browser's toolbar includes navigation buttons, a search engine (Google), and a bookmark bar with links to 'IT Convergence - Links', 'IT Convergence - Vision', 'iGoogle', 'Salesforce.com', 'ITCMail', 'ITC - Calendar', 'My Oracle Support', 'Box.net', and 'Vision Public'. The main content area is titled 'Pat Home Page' and contains a grid of six dashboard tiles:

- Dashboards**: A tile showing various charts and graphs.
- Reports**: A tile showing a magnifying glass over a document.
- Clients Page**: A tile titled 'Clients' with a list of client names and phone numbers: 1-800-Flowers, Inc 13437; 20TH CENTURY FOX 23654; 21 Tech, LLC 652798; 3D SYSTEMS CORPORATION 434; 99C ONLY STORE 17895.
- Intranet**: A tile showing a 'Welcome to Oracle Portal' message.
- Applications**: A tile showing a computer monitor displaying a web application.
- Org Chart**: A tile showing a 3D organizational chart with a red figure at the top.

The right-hand sidebar contains:

- An **Edit** button.
- A **Links** section with buttons for [Back to Home](#) and [IT Convergence](#).
- A **My Stuff** section with a [Go to My Stuff](#) button.
- A **Pending Notifications** box showing a count of **0**.

Noetix Dashboards



Portal + Noetix

AR Aging Buckets by %

Department	Current %	Total Past Due %	Current + 30 %	Past Due 30 + %
<u>Others</u>	19%	81%	93%	7%
<u>Consulting</u>	62%	38%	83%	17%
<u>FMS</u>	0%	100%	0%	100%
<u>ISS</u>	76%	24%	88%	12%

AR Aging Buckets by Amount

Department	Outstanding Amount	Current	Total Past Due	1-30 Days	31-60 Days	61-90 Days	91-180 Days	181-361 Days	361 + Days
<u>Others</u>	\$125,699	\$23,448	\$102,251	\$92,885	-\$15,925	-\$15,578	\$2,176	-\$5,717	\$44,412
<u>Consulting</u>	\$5,032,999	\$3,133,438	\$1,899,561	\$1,038,914	\$286,341	\$358,432	\$176,244	\$29,959	\$9,672
<u>FMS</u>	\$374	\$0	\$374	\$0	\$0	\$0	\$0	\$374	\$0
<u>ISS</u>	\$2,485,020	\$1,892,636	\$592,384	\$287,045	\$229,046	\$44,708	\$12,015	\$19,570	\$0

Refreshable Excel

P&L BY DEPARTMENT.xls [Compatibility Mode] - Microsoft Excel

File Home Insert Page Layout Formulas Data Review View Add-Ins BI Publisher

Clipboard Font Alignment Number Styles

E27 =IF(Summary!\$B\$15>=3,

	A	B	C	D	E	F	G	H	I	J
1						Year:	2007			
2						C.Center:	Jake 1		Cost Centers:	231 236 330 331 33
3						Period:	3-2007			
4										
5										
6			January	February	March	April	May	Jun	July	August
7			Actual	Actual	Actual	Budget	Budget	Budget	Budget	Budget
8			Revenue							
9	401100	Project - Client Labor Revenue	778,289	729,957	854,940	0	0	0	0	0
10	401200	Project - Client Reimbursed Expenses Revenue	34,142	20,553	19,389	0	0	0	0	0
22		Total Revenue	812,431	750,510	874,329	0	0	0	0	0
24	601100	Salary Base Compensation	339,144	296,696	360,376	0	0	0	0	0
26	601120	Salary Bonus	90,663	30,765	71,454	0	0	0	0	0
27	601130	Salary Vacation/PTO	18,344	18,969	17,781	0	0	0	0	0
28	601135	13th Payment	9,319	8,281	10,597	0	0	0	0	0
29	601140	Salary Holiday Pay	10,705	0	0	0	0	0	0	0
31	601160	Commission - Salary	10,641	20,948	26,500	0	0	0	0	0
39		Total Salaries	478,816	375,660	486,708	0	0	0	0	0
41	601410	Payroll Taxes Expense	38,369	31,029	20,735	0	0	0	0	0
42	601440	Payroll Statutory Benefit	29,147	20,523	24,882	0	0	0	0	0
45	601530	Medical Insurance	16,645	17,693	25,158	0	0	0	0	0
46	601540	Other Benefits	300	360	360	0	0	0	0	0
47	601550	Training Allowance	1,148	3,175	1,710	0	0	0	0	0
48	601560	Book Expenses	0	37	0	0	0	0	0	0
51		Total Benefits	85,609	72,817	72,845	0	0	0	0	0
56	591222	Corp Contractor	3,844	4,489	5,774	0	0	0	0	0
57		Total Subcontractors	3,843.81	4,489	5,774	0	0	0	0	0
59	551100	Project - Borrowed Labor	(7,088)	0	0	0	0	0	0	0
62	552100	Project - Lent Labor	0	(22,504)	(24,753)	0	0	0	0	0
65		Total Project-Borrowed Cos	(7,088)	(22,504)	(24,753)	0	0	0	0	0

Noetix WebQuery

NOETIX

Welcome, gfgonzalez!
my web queries · logoff · help

Search 'IT Management' folder
Advanced Search [switch to manage]

My Web Queries

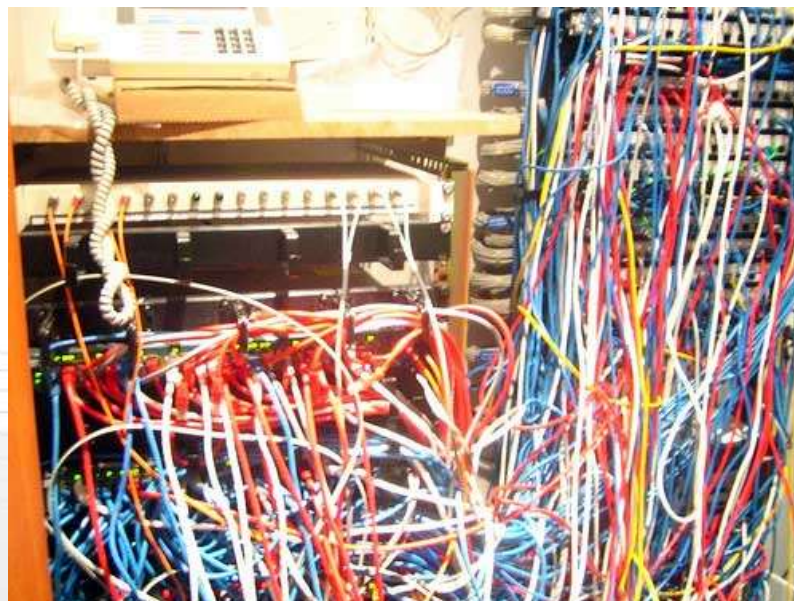
My Web Folders ▾ | Public > IT > IT Management [0 folders] [17 queries]

Double click on a query to execute it. [17 queries]

- IT Internal Projects** [Modified: 8/7/2009 1:40 PM]
· Internal Projects
- ITC Closed Service Requests by Group** [Modified: 6/25/2009 12:28 PM]
· This is the closed request list for IT Convergence within a date range.[Copied by gfgonzalez]
- ITC Install Base** [Modified: 3/25/2009 10:18 AM]
· This report shows information about the install base of ITC.
- ITC Install Base - Assigned Counts by Cost Center** [Modified: 3/25/2009 10:18 AM]
· This report shows information about the install base of ITC.
- ITC Install Base - Spare Counts by Cost Center** [Modified: 3/25/2009 10:18 AM]
· This report shows information about the install base of ITC.
- Open Backoffice Service Requests** [Modified: 9/1/2011 8:11 AM]
· This report shows open Service Requests for the departments HR and Finance (Backoffice)
- Query Usage by Queries** [Modified: 10/1/2007 3:54 PM]

Results...

- Too many tools
- Too many ways of accessing the information
- Performance on complex reports
- Information not connected (drill down)
- High maintenance
- And mobile?



BI Strategy Goal

- Think Big
- Start Small
- Foster Business-IT Partnership
- Clean Up
- Provide A Portfolio Of Tools



Think Big

THINK BIG

Don't think of BI as synonymous with query tools; instead, think about how information can be used to improve everything about your business

Start Small

- A focused project will yield a fast win, garner executive enthusiasm, and provide greater insight into BI's complexities



Foster Business-IT Partnership

- Learn what drives the business. Staff, BI teams jointly with business and tech experts.



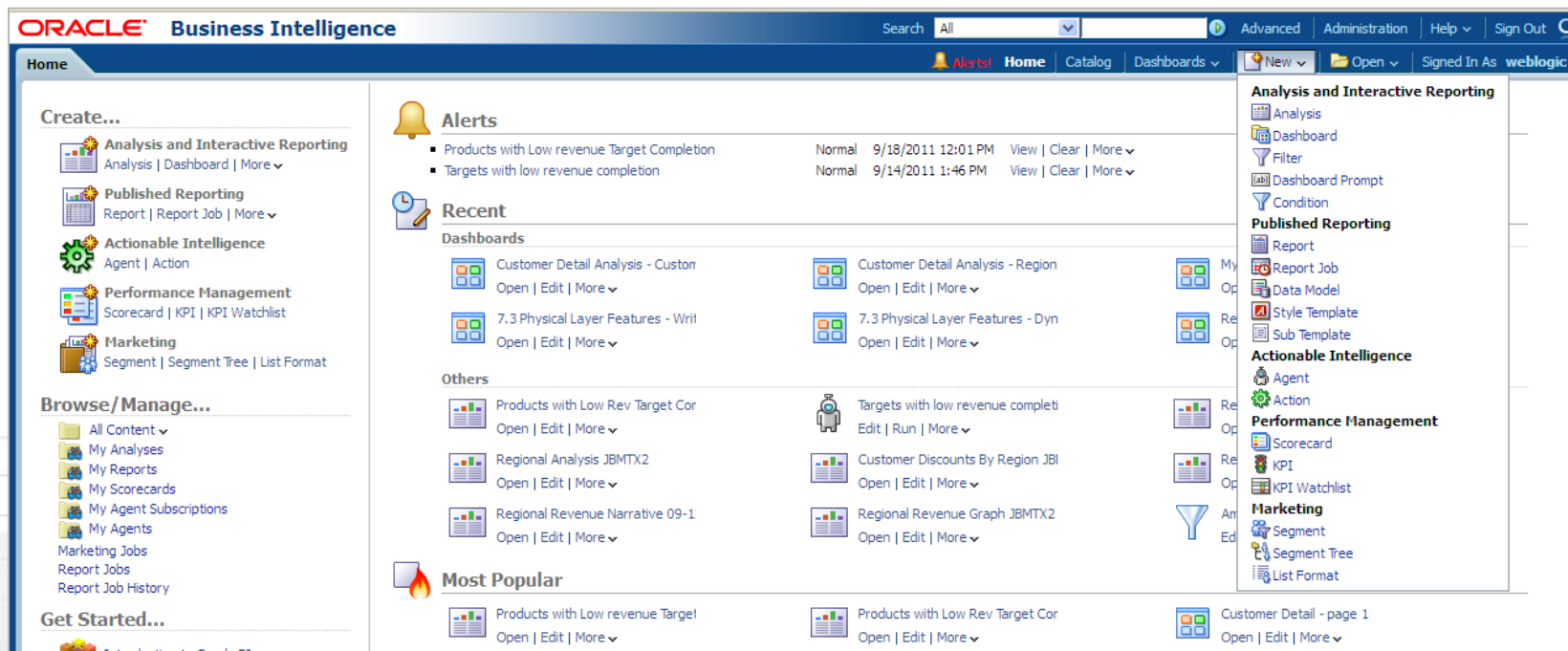
Clean Up

- If your source systems are a mess, your BI platform will be, too. Use a data governance program to improve data integrity.

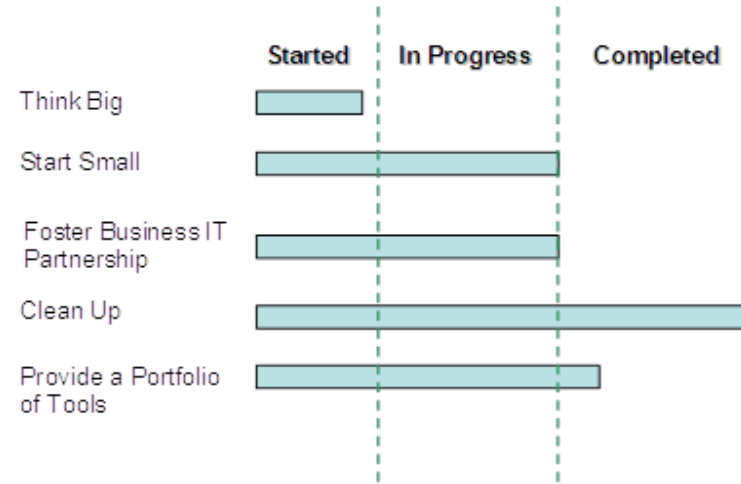


Provide a Portfolio of Tools

➤ BI interfaces are optimized for different users and applications. Don't underestimate the importance of interface appeal.



Architecture, Goal and constrains

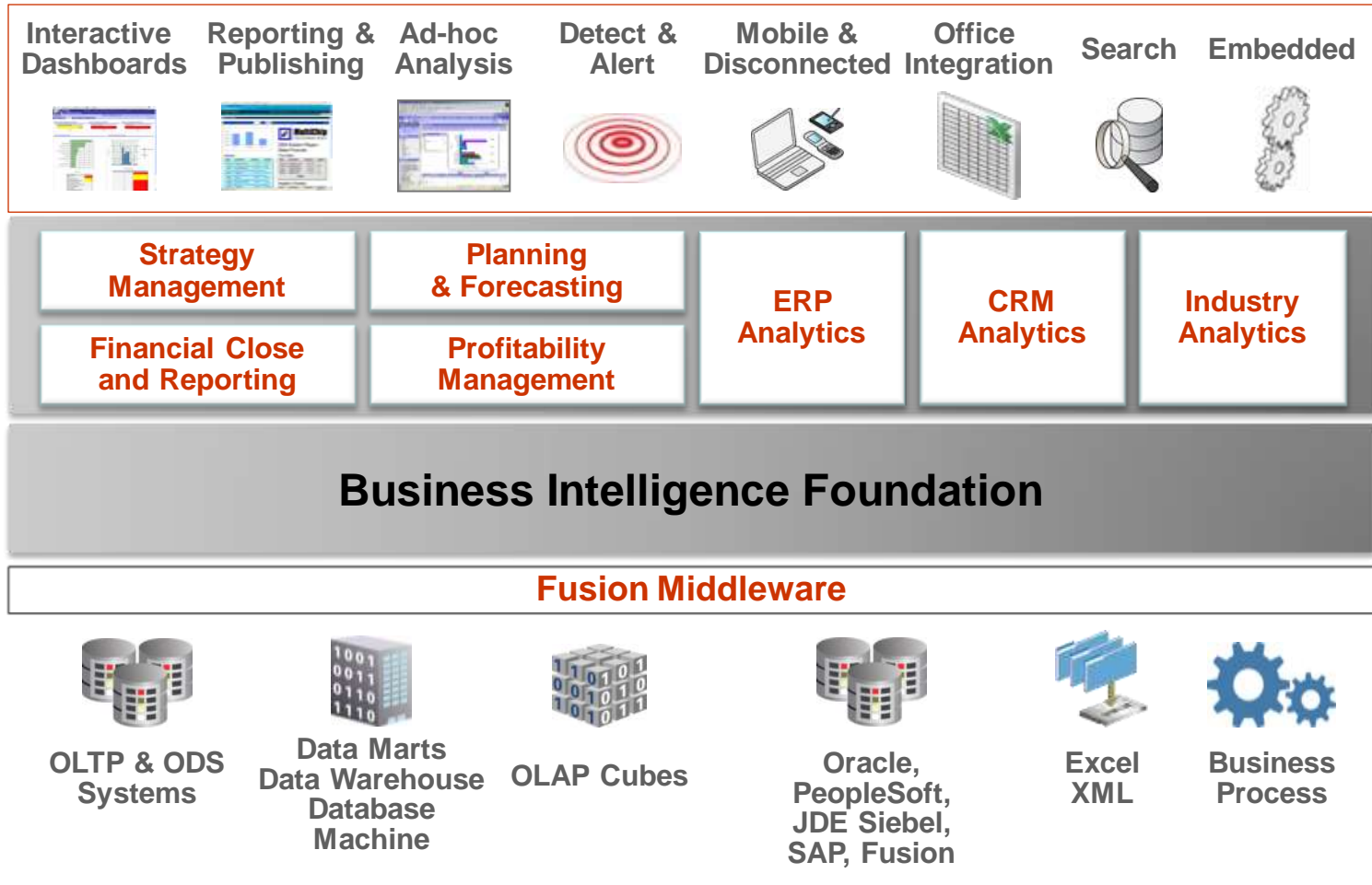


©Copyright 2007, ASX LLC

What we really wanted was...

- Dashboards
- Reports and publishing
- Ad-hoc Analysis
- Alerts
- MSOffice plugin
- Mobile
- Connection to EBS Database and DW

Oracle Business Intelligence Enterprise Edition



Oracle BI Applications

ORACLE BUSINESS INTELLIGENCE

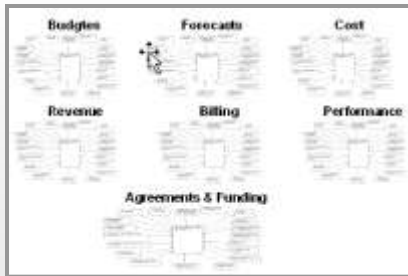
CRM ANALYTICS			ERP ANALYTICS				
CASE MANAGEMENT <ul style="list-style-type: none"> Case Processing Service Requests Incidents Activity Management Resolution Organizational Efficiency 	MARKETING <ul style="list-style-type: none"> Campaign Effectiveness Customer Insight Product Propensity Market Basket Analysis Campaign ROI 	SERVICE & CONTACT CENTER <ul style="list-style-type: none"> Service Effectiveness Customer Satisfaction Resolution Rates Service Rep Efficiency Service Cost Service Trends 	FINANCIALS <ul style="list-style-type: none"> General Ledger Accounts Receivable Accounts Payable Cash Flow Profitability Expense Management 	PROCUREMENT & SPEND <ul style="list-style-type: none"> Direct & Indirect Spend Buyer Productivity Contract Compliance Supplier Performance Purchase Cycle Time Employee Expense 	SUPPLY CHAIN & ORDER MGMT <ul style="list-style-type: none"> Revenue & Backlog Inventory Analysis Fulfillment Status Customer Status Order Cycle Time BOM Analysis 		
PRICE <ul style="list-style-type: none"> Price Segments Price Waterfall Analysis Deal Life Cycle Deal Desk Analysis Product Pricing Performance 		LOYALTY <ul style="list-style-type: none"> Member Demographics Program Revenue Membership Trends Promotion Effectiveness Points Analysis 		PROJECTS <ul style="list-style-type: none"> Project Funding and Budget Product Cost Project Revenue Project Billing Project Profitability 		HUMAN RESOURCES <ul style="list-style-type: none"> Employee Productivity Compensation Talent Management Recruiting Analysis Learning Analysis Workforce Profile 	

SOURCE ADAPTERS: **ORACLE** PeopleSoft. **SIEBEL** JDE EDWARDS **SAP** AND OTHER OPERATIONAL AND ANALYTIC SOURCES

Oracle BI Applications Components

1

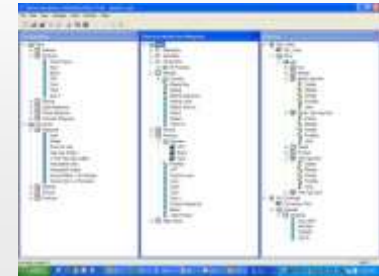
Pre-built warehouse with star-schemas designed for analysis and reporting.



3

Pre-mapped metadata, including embedded best practice calculations, and over 500 pre-built metrics for the project organization.

- Presentation layer
- Logical business model
- Physical sources



2

Pre-built ETL to extract data from a large number of operational tables and load it into the DW, sourced from CRM, ERP, and other sources.



4

A “best practice” library of over 100 pre-built intelligence dashboards, reports and alerts for project managers, program managers, project accountants, and executives.



Why OBI Applications?

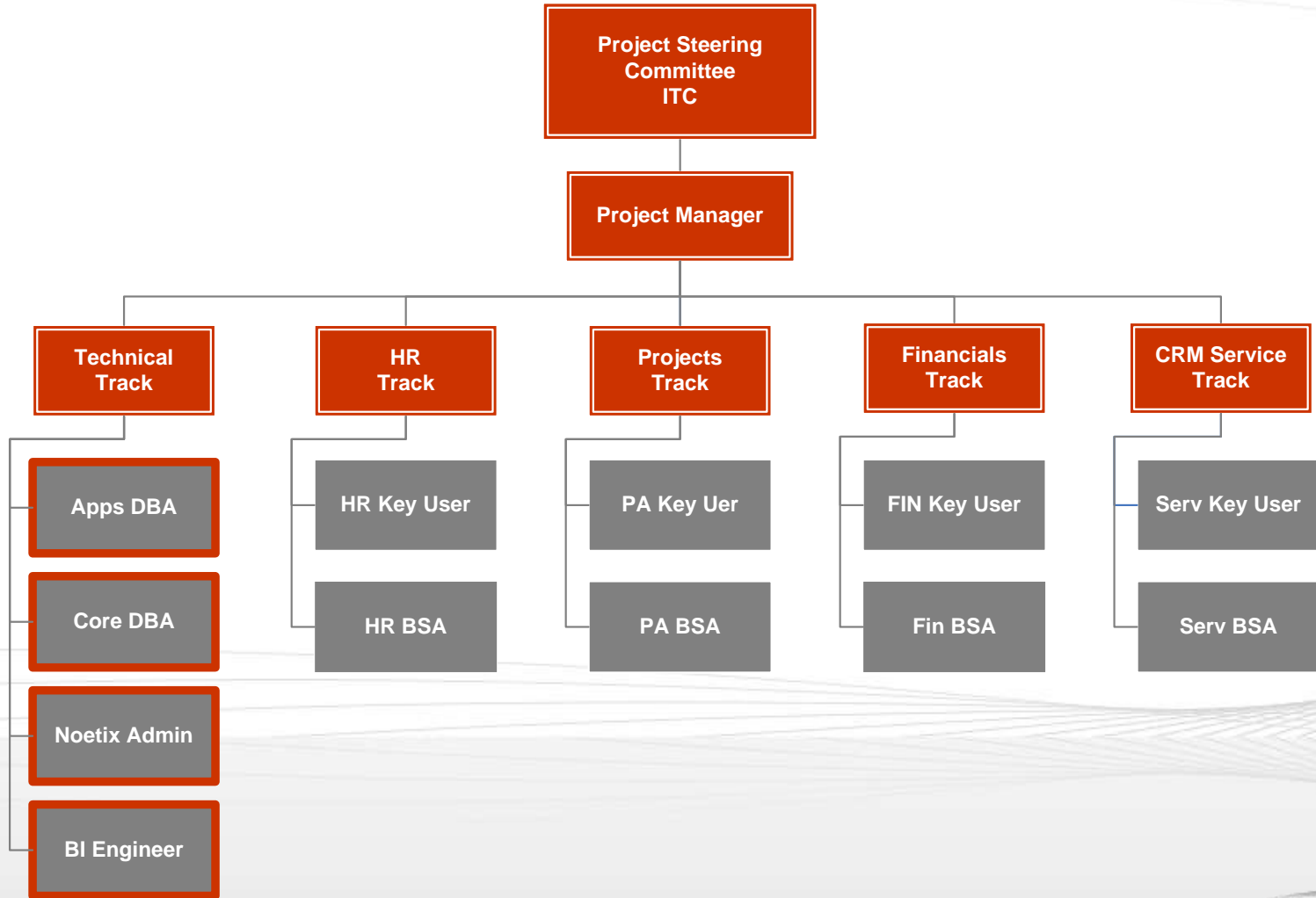
- **OBI Applications Positioned as a cost-effective, BI Solution and predicted to gain traction in the market**
 - ITC Wanted to Gain 1st Hand Expertise with OBI Applications and the OBIEE platform
- **Applicable to size/nature of ITC's operation**
- **Short Deployment Time vs. building from scratch**
- **Impressive out of the box functionalities paired with ease of adaptability**
- **Seamless integration with the E-Business Suite**



Deployment Process

- Time frame – 6 months
- Project phases
- Resources used –functional + technical (OBI Applications + E-Business Suite)
- Modules deployed: Financials, Projects, Human Resources, Services

ITC BI Project Team



BI Components – to be licensed

- **Weblogic / BI Admin**
- **Informatica**
- **Database**
- **BI Apps**
 - Financials
 - Projects
 - Human Resources
 - Service

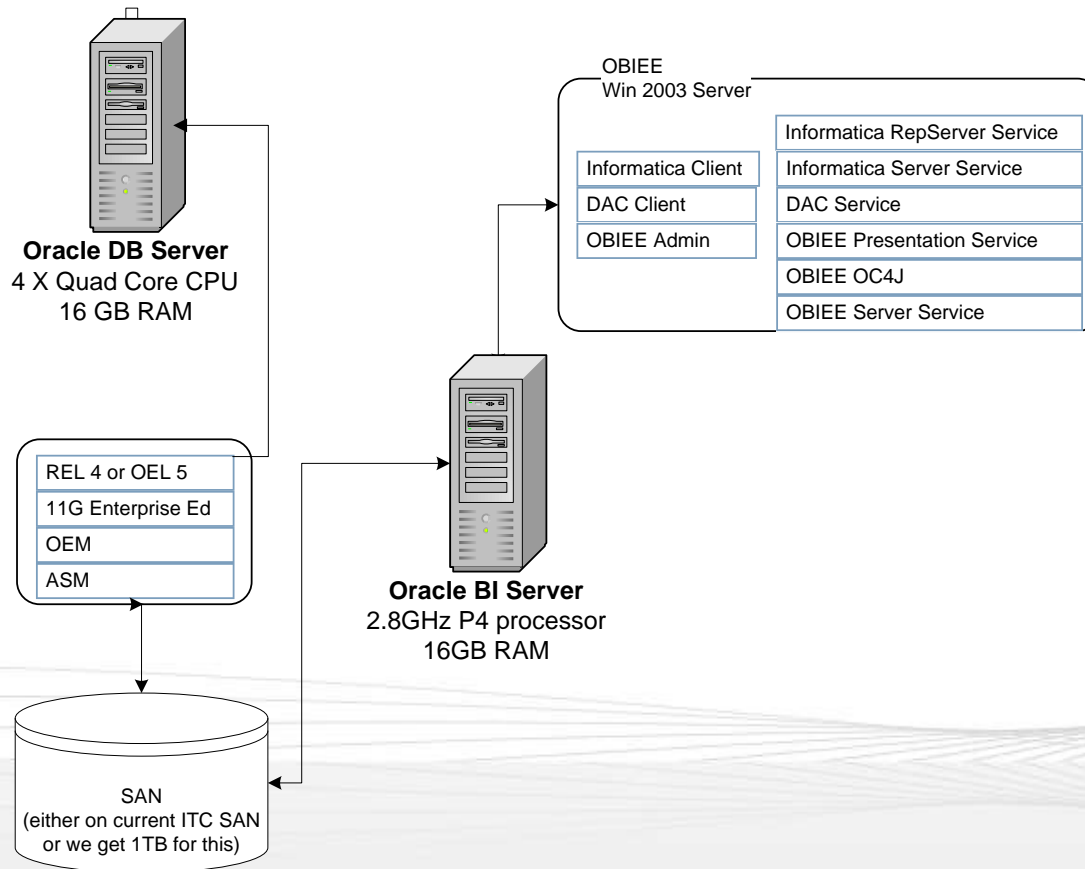
Project Phases:

Phase 1 – Focus on Revenue and Cashflow

- **Installation**
- **New infrastructure Setup**
- **BI Server built (BIApp)**
 - HW and OS identified
 - HW configured
 - OS Installation and admin access
- **BI DB Server built (BIDB)**
 - HW and OS identified
 - HW configured
 - OS Installation and admin access
- **Software Install**
 - Definition of Databases and Environments
 - "BI DB creation, DB users and roles and Passwords in test environment"
 - Preparation for OBI Applications installation
 - Installation of JDK 1.6x
 - Installation of OBI Applications apps 10.1.3.4
- **Installation of Oracle Fusion Middleware 7.9.6**
 - Informatica configuration
 - Importing and configuring domain and repository
- **Configuration of DAC**
 - Setting up DAC server and Client
 - Verification of OBI Applications/DB components

ITC BI Footprint

IT Convergence Production– Business Intelligence Footprint



Phase Zero

- Pilot of the tool with users
- Training IT and Users



Project Phases

Phase 1 – Focus on Revenue and Cashflow

Configuration

- **Configuring ETL run**
 - CheckPoint for connections
 - Run ETL for Financials, Projects"
 - Troubleshooting ETL Process
 - Configure the default RPD
 - **Data Transfer and Load for test**
 - Reloading full data
 - Verify data load
 - Finance
 - Functional team review and support of datasets
 - Configure Source & Lookup Files for Oracle Analytics
 - Refresh ETL for module
 - Check Dashboard and Data in warehouse
 - **Projects**
 - Functional team review and support of datasets
 - Configure Source & Lookup Files for Oracle Analytics
 - Refresh ETL for module
 - Check Dashboard and Data in warehouse
- **Security Strategy**
 - Evaluate different options and features
 - Test options
 - Implement solution

Project Phases

Phase 1 – Focus on Revenue and Cashflow

User Acceptance

➤ Finance UAT

➤ Unit Test

- Test by Functional Project Team

➤ Integration Test

- Present OBI Applications Finance to key users
- Validate Dashboards

➤ Acceptance from finance key users

➤ Projects UAT

➤ Unit Test

- Test by Functional Project Team

➤ Integration Test

- Present OBI Applications Finance to key users
- Validate Dashboards

➤ Acceptance from projects key users

➤ Training

➤ Training to key users

➤ Train the trainers

➤ Users trained

➤ Go Live

➤ Training documentation

➤ Communication on support

➤ Go live

Benefits Achieved

- **Gained visibility into each business area**
- **One Source of Truth for project management information**
- **Secure access to information by role or responsibility**
 - All levels of the company gain access to valuable information within security parameters
- **Managers and supervisors access their own information and maintain its accuracy**
 - OBI Applications immediately helped detect and correct multiple errors
- **Key dashboards, reports and performance indicators are available upon login**



Project Management Reporting, Now and Then...

- Maintenance of OBI Applications Dashboards is almost nil
- Previously we developed new reports, every two weeks, depending on who requested them
- Users have confidence in data from OBI Applications Dashboards
 - Leads to faster, better decision making

Lessons Learned

- **OBI Applications ≠ a replacement of more detailed reporting tool**
- **The information shown in OBI Applications is grouped and summarized to make it more efficient to run and display**
 - **Due to specific needs, we've kept the lowest level of information in another reporting tool for reconciliation and audit purposes**
- **OBI Applications historical data vs. live data: Immediate changes in Oracle are not reflected in OBI Applications until the next update is run. Usually this happens once a day**



Customization Considerations

- **Created an ETL-based view to show HR, Project Assignment, and Cost data on a daily basis**
 - Flexibility to Group by Data Range or Employee to calculate utilization
 - Caveat – Performance impact of working this tremendous volume of data

- **Development Time Due Diligence**
 - Hours needed for development could be significant, and should be carefully estimated depending on the layer (Webcat Vs ETL) that needs configuration

10 things we must do

- Choose a C-level sponsor (who's not the CIO)
- Create common definitions
- Assess the current situation
- Create a plan for data storage
- Understand what users need
- Decide whether to buy or build the analytical data model
- Consider all business intelligence components
- BI implementations require guidance from who has deep experience
- Think “actionable” and “baby steps”
- Choose low-hanging fruit to start



Thank You!

ORACLE APPLICATIONS WORKSHOPS

ORACLE R12

Preparing for an Oracle R12 Upgrade

Oracle R12 Financials New Features

Subledger Accounting

E-Business Tax

BUSINESS INTELLIGENCE

OBIEE 11g for Administrators

OBIEE 11g for End Users

Reporting Options for Oracle E-Business Suite

Workshops are available in:

New York
Atlanta
Dallas

San Francisco
Denver
Madison

ORACLE TECHNOLOGY
CHANGES FAST.
**INVEST IN TRAINING
TO KEEP UP!**



Whether you're being asked to do more with less or your organization is ramping up new projects, strengthening your skills is the best way to secure your career path. Gain functional and technical expertise in Oracle R12, OBIEE and other Oracle solutions from seasoned instructors. Check out our website for specific course details and dates:

www.itconvergence.com/workshops
Don't delay, register today!

ORACLE APPLICATIONS
WORKSHOPS

Sponsored by:



ORACLE CERTIFIED PARTNER



See You On Down the Road

- Join us at a workshop www.itconvergence.com/workshops
- Stop by at Oracle OpenWorld 2011 Booth #2109

The logo features the text "IT Convergence" in a bold, sans-serif font. "IT" is in black, and "Convergence" is in red. A grey swoosh starts under the "I", goes up and over the "C", and then curves back down under the "e".

IT Convergence[®]

EXPERIENCE the power of results